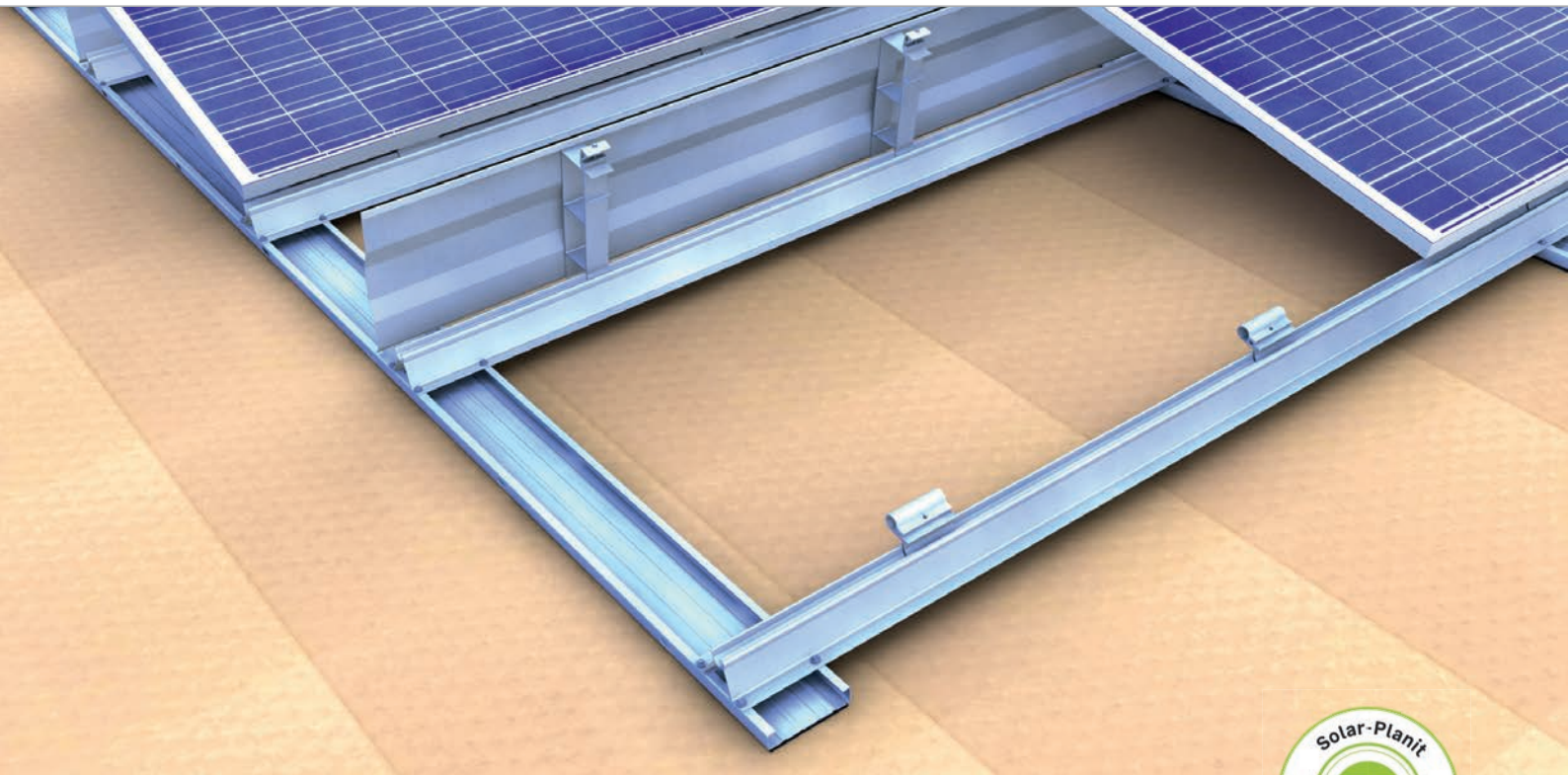
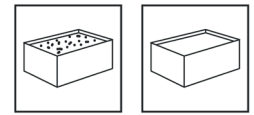


Flat roof | south system I

Flat roof system closed I



Our flexible solution for south-facing direction

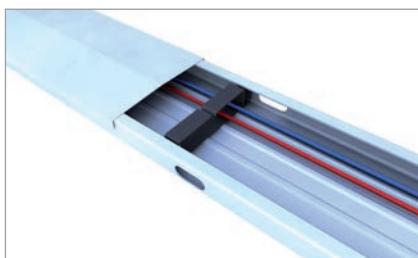
- optimum module orientation towards south
- optimum elevation angle 13° for good efficiency and self-cleaning
- cross connections at module field edges for high stability
- high flexibility thanks to individually selectable row distance
- connected module fields up 34 m length possible

product variants

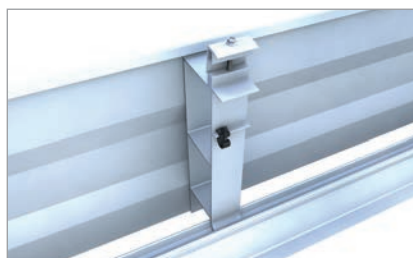
- different base troughs: blank, with PE separation layer or with PE pads for cross drainage
- gravel base trough 230-90 for convenient ballasting with existing gravel
- Wind deflector for 72-cell modules (up to 2,18m length)

Your benefits

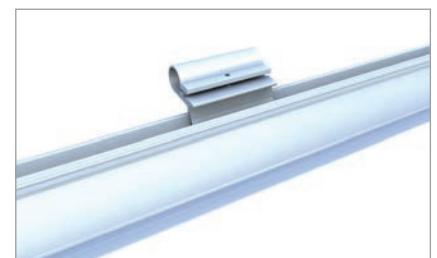
- wind-tunnel tested aerodynamics
- wide and continuous base troughs for optimum load redistribution and low surface pressure
- stability and flexibility thanks to cross layer system and module clamping in the optimum clamping range
- suitable for wide modules



Base trough with cover and cable bracket

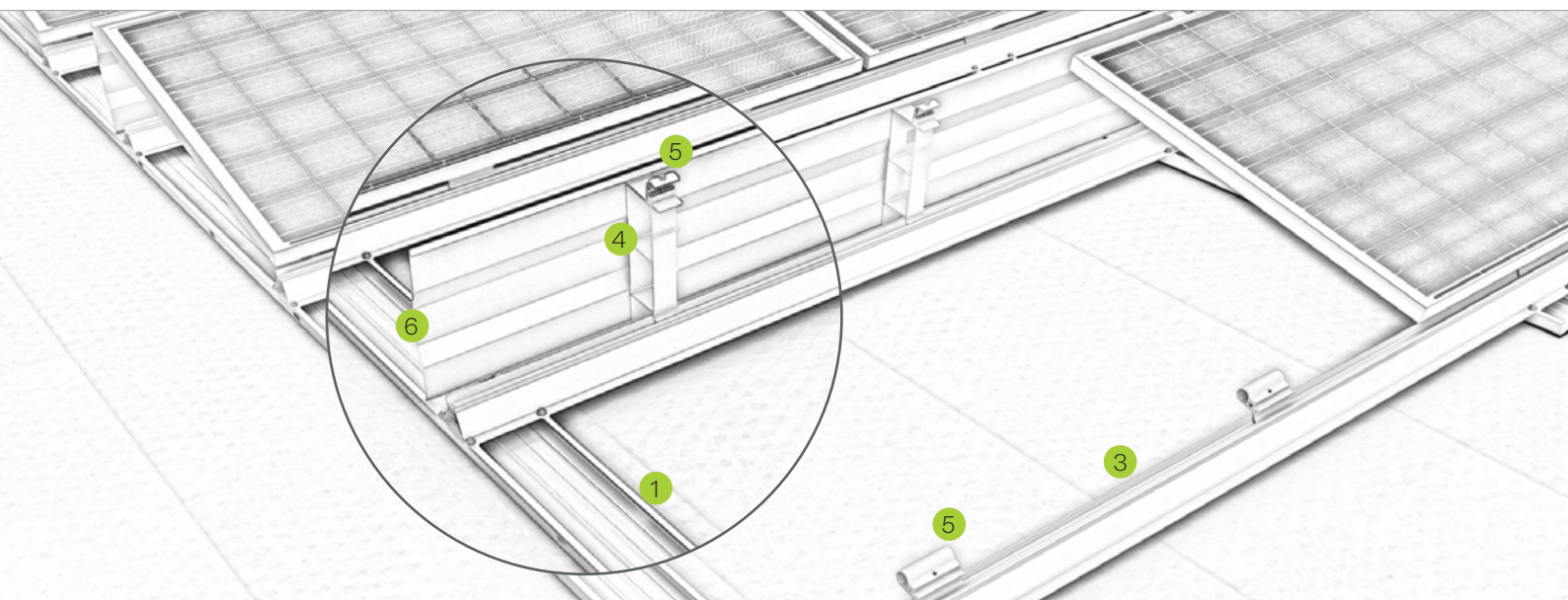


Module support and wind deflector closed I



Module bracket set front in base profile

Flat roof system | south system I



Pic Designation

- 1** Base trough

 - much space for ballast, optionally ballast trough available
 - top cover when used as a cable channel
- 2** Connectors and expansion joints

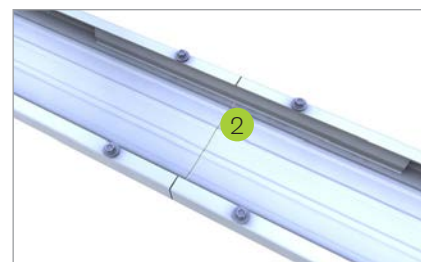
 - connectors for module fields up to 17 m length
 - expansion joints to connect two 17 m module fields
- 3** Base profile

 - module support and load redistribution at the same time
 - serves to hold the front module fastener
- 4** Module support

 - for placement and fixing of the C-rail
 - for mounting on the gravel rail
- 5** Module bracket

 - entirely pre-assembled
 - for connection via the existing module frame hole
- 6** Load redistribution via wind deflector

 - for cross connection and load redistribution
 - aerodynamic design and easy installation



Base trough extension



Flat roof system closed I on gravel

Mounting video



novotegra GmbH
 Eisenbahnstraße 150 | 72072 Tübingen | Deutschland
 Tel. +49 7071 98987-0, info@novotegra.com
 www.novotegra.com

Subject to changes and errors excepted.
 Last updated: April 2021 / TP